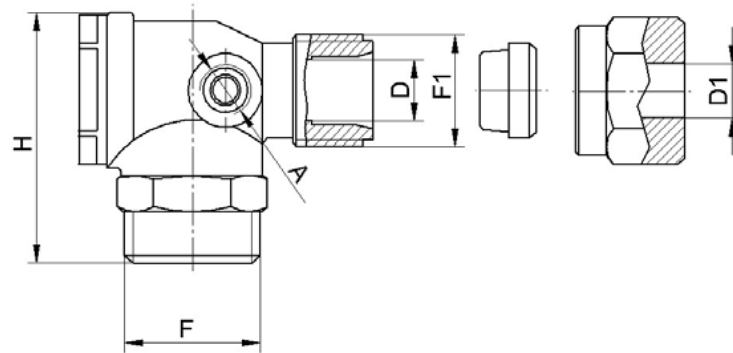


DATENBLATT / TECHNICAL DATA SHEET RV1

Eck-Rückschlagventil / Non-Return Valve angle type

Erstellt / made : 27.07.2018

Seite 1



Code	F	F1	A	D	D1	H	L
	1/4"	1/4"		6	8	35	34
	3/8"	1/4"		6	8	34	31
	1/4"	3/8"	1/8"	6	10	43	41
	3/8"	3/8"	1/8"	9	10	41	46
	3/8"	3/8"	1/8"	9	12	41	46
	1/2"	3/8"	1/8"	9	10	44	49
	1/2"	3/8"	1/8" *	9	10	44	49
	1/2"	3/8"	1/8"	9	12	44	49
	1/2"	1/2"	1/8"	11	14	48	53
	1/2"	22X1,5"	1/8"	11	15	48	53
	3/4"	3/8"	1/8"	9	10	47	51
	3/4"	1/2"	1/8"	11	14	48	52
	3/4"	22X1,5	1/8"	11	15	48	52
	3/4"	3/4"	1/8"	16	18	61	71
	3/4"	3/4"	1/4"	16	18	61	71
	1"	3/4"	1/8"	16	18	58	70
*Version mit „A“ Anschluss auf linker Seite / Version with „A“ connection on left side							

Werkstoff / Material	
Ventilkörper / Valve body	EN 12164:98 CW 614N
Dichtung / Gasket	NBR o VITON
Verschluss / Cap	EN 12164:98 CW 614N
O-Ring / O-ring	NBR o VITON
Feder / Spring	EN 10270-3

Technische Daten / Technical data	
Arbeitsdruck / Working pressure	Max. 16 bar
Temperatur / Working temperature NBR	-10° C + 80° C
Temperatur / Working temperature VITON	-10° C + 200° C